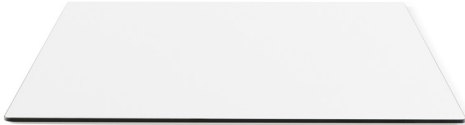


Laminated tops with flared edge and prepared with four M6 threads for the "star" cross.

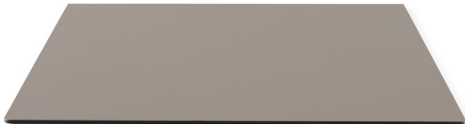
1. WHITE



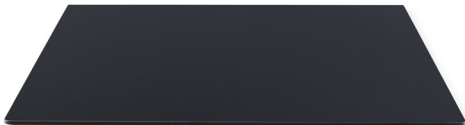
2. BLACK



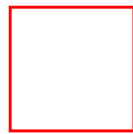
13. DOVE GREY



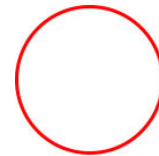
14. LONDON GREY



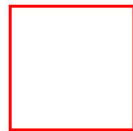
STANDARD DIMENSIONS



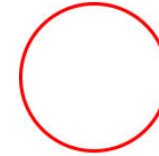
590 x 590 mm 5 kg



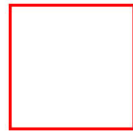
ø 590 mm 4 kg



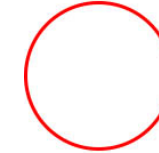
690 x 690 mm 7 kg



ø 690 mm 5.5 kg

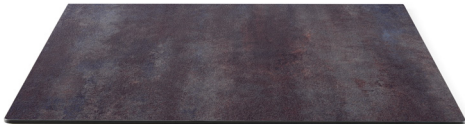


790 x 790 mm 9 kg



ø 790 mm 7.5 kg

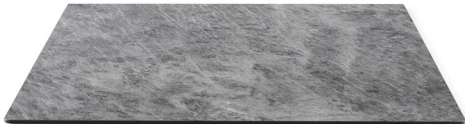
4. CORTEN



9. BIRMANIA ELM



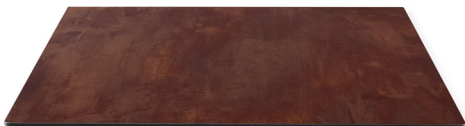
5. LIGHT MARBLE



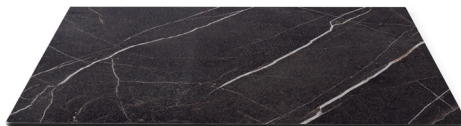
10. ISTANBUL ELM



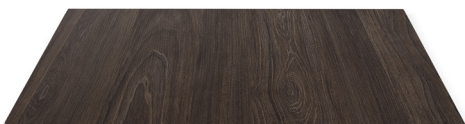
6. RUST



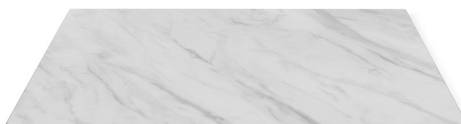
11. AFRICA MARBLE



8. TORONTO ELM



12. CARRARA MARBLE



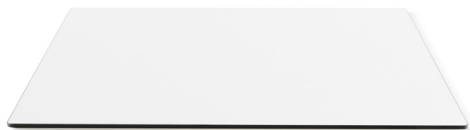
690 x 690 mm
7 kg

N.B: Colors may vary slightly from production to production.

*

see "[Warranty, cleaning and maintenance of the products, use and placement of the products](#)"

1. WHITE



7. CEMENT

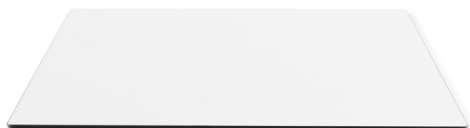


OVALOID TOPS



600 x 900 mm

1. WHITE



QUADROIDE TOPS

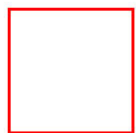
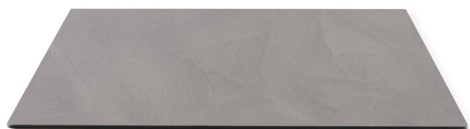


690 x 690 mm



1050 x 595 mm

3. CIMANT GREY



7 kg

690 x 690 mm



9 kg

790 x 790 mm

TECHNICAL DETAILS

- Stratified top
- Countersunk edge prepared with 4 threads M6 for the cruise star
- 10 mm thick
- Suitable for outdoor *

EXTRAS

- Other tops of various dimensions and colours available on **request**
- Screw kit for the attachment of the base to the base

Before assembling, remove the transparent protective film from both the upper and bottom surface of the top.



N.B: Colors may vary slightly from production to production.

* see "[Warranty, cleaning and maintenance of the products, use and placement of the products](#)"