

BIM.**archiproducts**[®]



PF STILE BIM PRODUCTS - CONTENT AND USER MANUAL

Authoring Software Autodesk Revit 2019

This document provides information on the content and the correct use of the BIM files in Revit format produced by PF STILE.

File name and definition

The BIM product is contained in the .rfa format file "PF STILE_Product Name"; the native file is created with the BIM authoring software Autodesk Revit 2019.

In addition to the object file, the company's information sheet (schedule) is provided. The information sheet, in .rvt format, contains information regarding the PF STILE product. This can be used to calculate the quantities and verify the characteristics of the product (Dimensions, Appearance, Thermal and Physical assets).

The information sheet has been divided in five categories: **Identity data** (manufacturer; model; description; product sheet; technical sheet; URL), **Dimensions** (height; depth; width, seat height), **Materials and finishes** (structure material, body material).

Other alphanumeric information about the product can be found in the Object's Properties Palette.

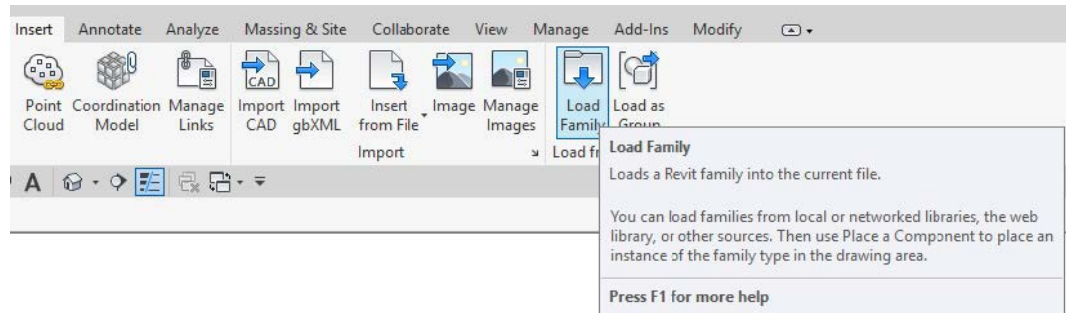
The designer/manufacturer who uses the PF STILE BIM content can calculate the quantities of the products used in his/her project, manage the quantities for the purchase order and transfer the information relating to the product used to those carrying out the work.

The product shown in this user guide is used as an example.

How to use PF STILE BIM content

Download and save the PF STILE .rfa objects in your personal library, then upload the BIM family to your project.

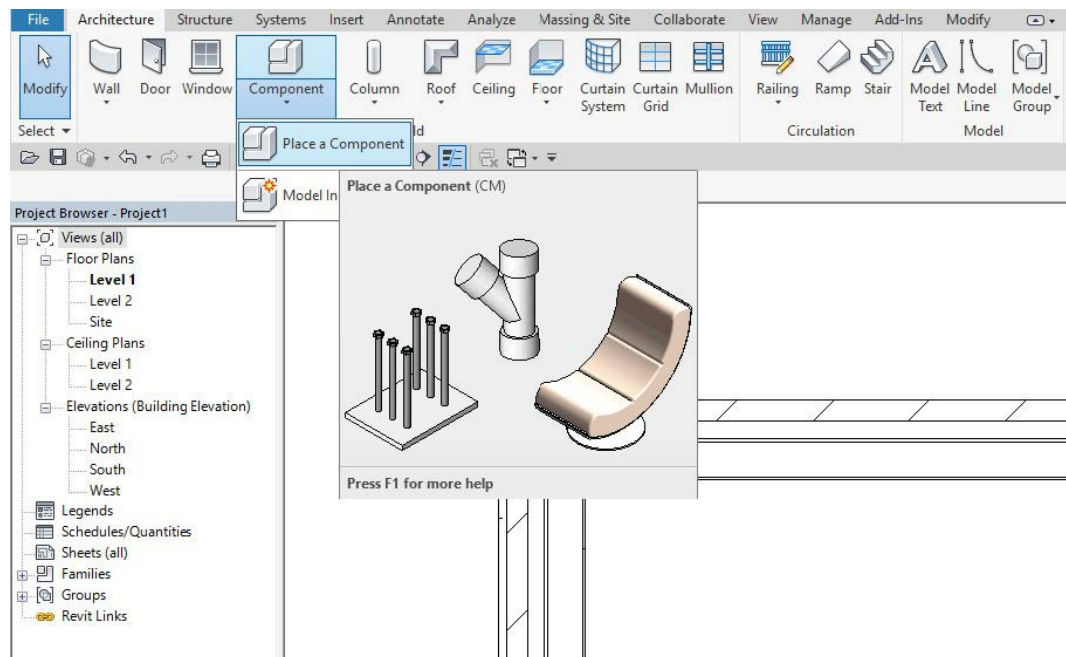
Load Family



Component positioning

Open any plan view and insert the desired PF STILE product using the Component command -> Place a component and position it within the project.

Place a component

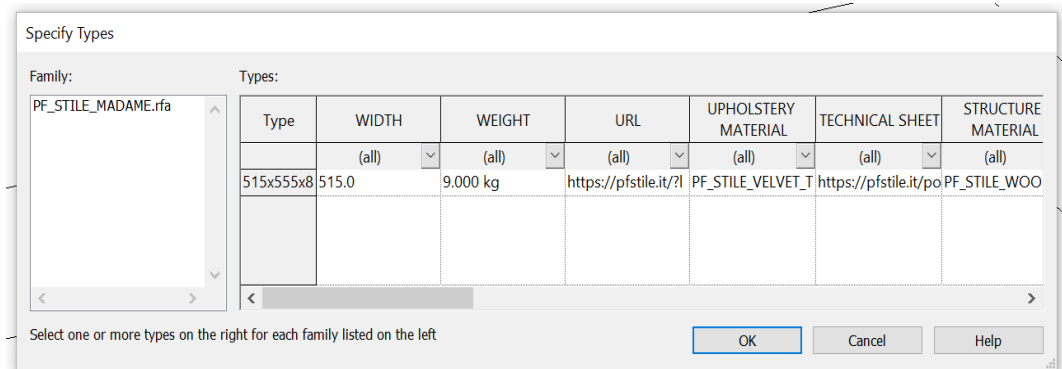


If you find a .txt file in the download file, archive it in the same location as the .rfa file.

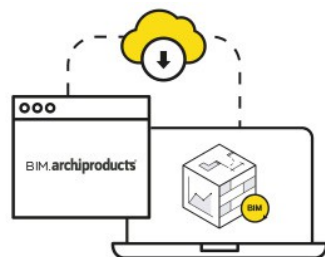
The .txt file contains the parameters and the respective values used to create the different types of a given family.

The .txt file includes the type catalogue. By using the type catalogue, it is possible to select and load only the desired types for your personal project, thus slimming down the project file.

Type catalogue



Refer to the technical parameters sheet for help when choosing the correct product.

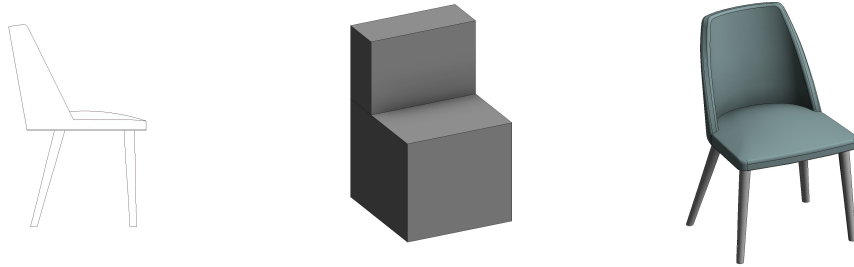


Now you can connect our database with your project: search and insert the best building and design products, use and manage them through my library and keep them updated through automatic notifications directly from Revit.

<https://bim.archiproducts.com/en/revit-plugin-in>

Level Of Geometry (LOG)

The object was created with three levels of geometric development visible in plan, elevation and section. In the **Coarse** level view, a 2D shape can be seen; the **Medium** level shows the overall geometric footprint; the **Fine** level shows the simplified 3D model of the product with fewer details.



LOG representation

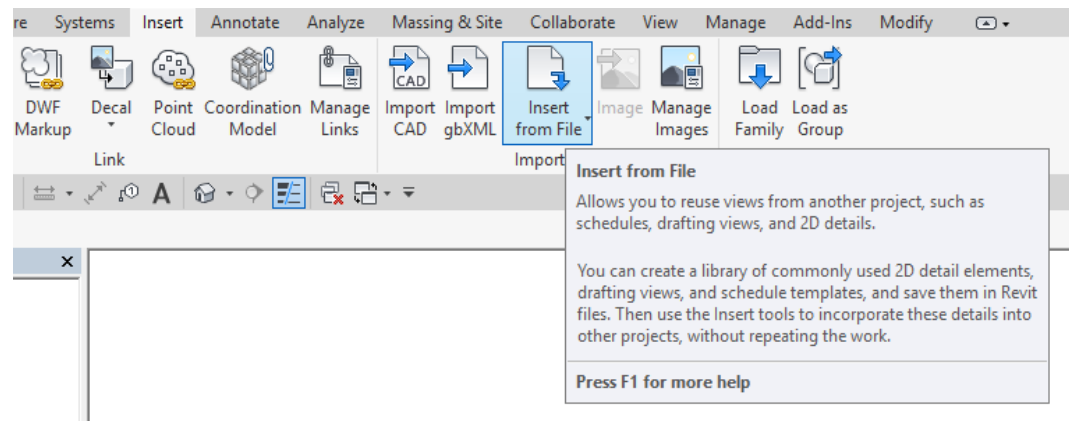
Schedule entry

In addition to the object file, the company's information sheet (schedule) is provided.

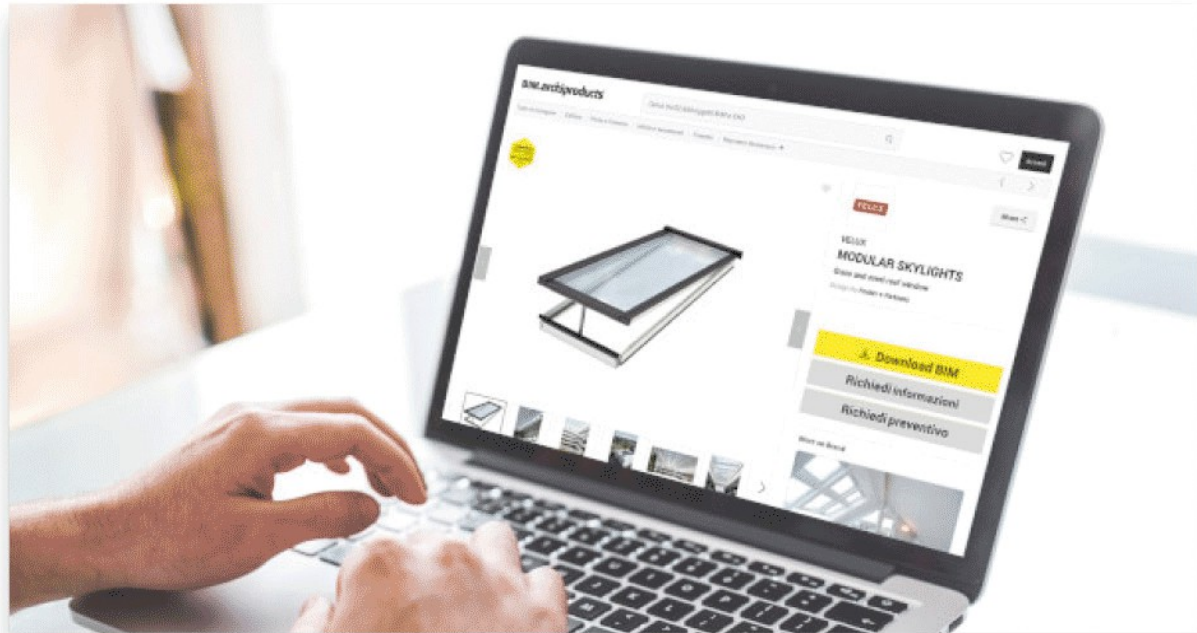
The information sheet contains information in .rvt format about the products, including the identity, dimensional and technical parameters, which can be used to calculate the quantities and verify the product's physical and performance features.

When using the BIM content, designers and manufacturers can calculate product quantities to be used in their projects, manage the quantities to be ordered and share the product information to those carrying out the work.

Load schedule



BIM.archiproducts®



Browse and download top products BIM files
Search for a product, filter by file format
or choose a category

DOWNLOAD BIM FILES NOW

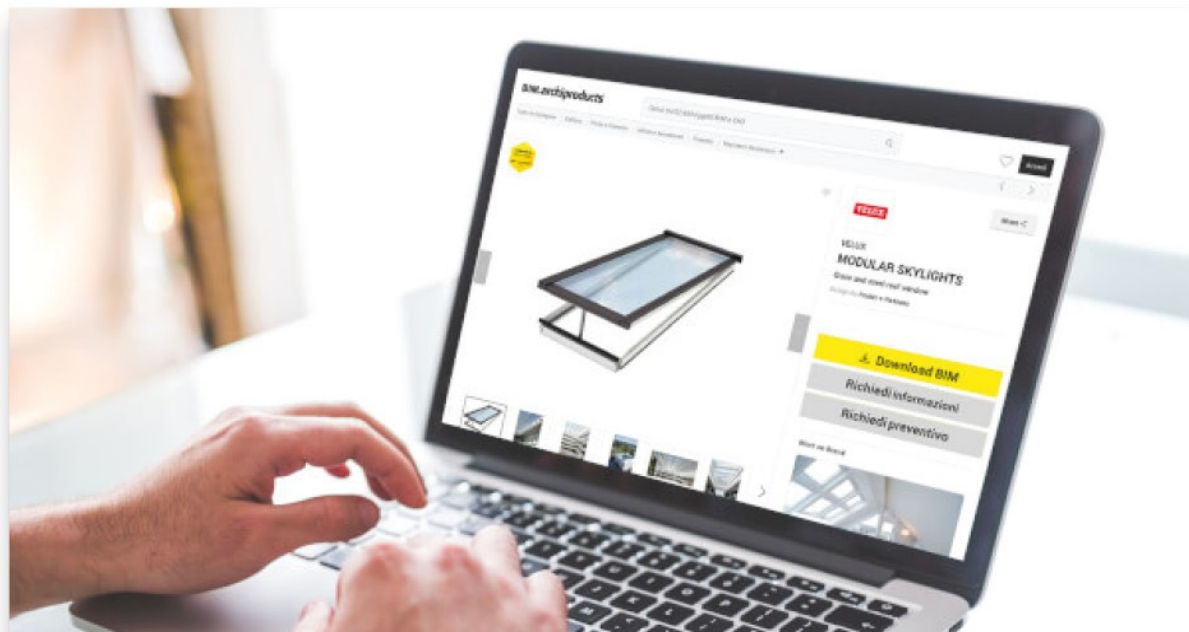


BIM.ARCHIPRODUCTS CERTIFICATION

All objects made by our team are recognizable thanks to the
"Featured by BIM.archiproducts" badge.

BIM.archiproducts®

BIM.archiproducts®



Browse and download BIM files for top products
Search for a product, filter by file format
or choose a category

DOWNLOAD BIMS NOW



BIM.ARCHIPRODUCTS CERTIFICATION

All objects made by our team are recognizable thanks to the
"Certified by BIM.archiproducts" badge.

BIM.archiproducts®

Contact us at infobim@bimarchipproducts.com
or call at +39 080-2460421



bim.archipproducts.com

THE ARCHITECTURE
& DESIGN NETWORK
—
archipassport

edilportale® archiportale® archipproducts® BIM.archipproducts® archilovers® © sayduck

Archipassport | Edilportale | Archiportale | Archipproducts | BIM.archipproducts | Archilovers sono marchi registrati da Edilportale.com Spa. © Copyright 2018 Edilportale.com Spa | Via Loiacono, 20 - 70126 Bari, Italia - tel. +39 080 24 60 421 | fax +39 080 99 95 130

BIM.archipproducts